

#calcpa_el

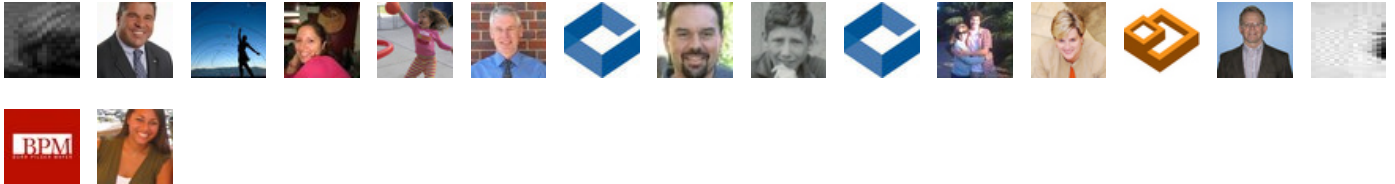
CalCPA Emerging Leaders

CalCPA Emerging Leaders launch: July 25-26

Trending Words

rt, @gretchenpisano, @erniealmonte, @cal_cpa, &, leader, inspired, -, don't, day, joanne, up, emerging, leaders, people

Event Participants





So inspired by next up in our emerging leaders program, expert from IDEO and Google will share insights on leading teams #calcpa_el

27-Jul-12 14:26 | clar_rosso



RT @calcpageoff: #calcpa_el @erniealmonte "tell people what they NEED to hear not what they WANT to hear"

27-Jul-12 13:59 | ErnieAlmonte



RT @calcpageoff: #calcpa_el @erniealmonte quoting NABA's motto "lift as you climb" help someone else up the ladder of success with you...

27-Jul-12 13:59 | ErnieAlmonte



RT @clar_rosso: #calcpa_el @ErnieAlmonte reminds of us NABA's motto: Lift as you climb!

27-Jul-12 13:59 | ErnieAlmonte



RT @calcpageoff: #calcpa_el @erniealmonte humility curiosity & veracity keys to successful leadership - Rhode Island's future looks bright with Ernie as Gov!

27-Jul-12 13:58 | ErnieAlmonte



#calcpa_el @fluttersunnel makes a presentation on #burningman to raise funding for #lighting #sierraleone #schools

27-Jul-12 04:12 | FlutterTunnel



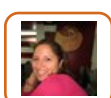
RT @calcpageoff: #calcpa_el @gretchenpisano - don't "should" on people and don't allow people to "should" on you... "should" happens?

27-Jul-12 00:49 | jillgorman



Perfect example of authentic leader! RT @cpdonnelley @ErnieAlmonte Greatly enjoyed your talk in LA. Thank you for speaking to us #calcpa_el

27-Jul-12 00:48 | jillgorman



Where does most of your to-do list fall? Be more effective! RT @calcpageoff #calcpa_el @gretchenpisano "better it, barter it or bag it"

27-Jul-12 00:48 | jillgorman



@ErnieAlmonte Greatly enjoyed your talk in LA. Thank you for speaking to us #calcpa_el

27-Jul-12 00:42 | cpdonnelley



#calcpa_el @gretchenpisano Lost Generation by Jonathan Reed <http://t.co/V7c7RFCX>

26-Jul-12 23:34 | calcpageoff



#calcpa_el @gretchenpisano - don't "should" on people and don't allow people to "should" on you... "should" happens?

26-Jul-12 23:17 | calcpageoff



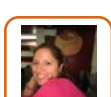
#calcpa_el @gretchenpisano "better it, barter it or bag it"

26-Jul-12 23:08 | calcpageoff



#calcpa_el @gretchenpisano "those who positively energize others are higher performers"

26-Jul-12 23:02 | calcpageoff



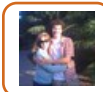
Nurture RT @Cal_CPA @calcpageoff #calcpa_el @erniealmonte: NABA's motto "lift as you climb" help someone else up ladder of success with you.

26-Jul-12 21:50 | jillgorman



#calcpa_el @erniealmonite "tell people what they NEED to hear not what they WANT to hear"

26-Jul-12 20:54 | calcpageoff



#calcpa_el Awesome session w Ernie Almonite - integrity and ethical practices. Preparation = success. Amundsen vs. Scott!!

26-Jul-12 20:51 | BarbRanes



#calcpa_el @erniealmonite quoting NABA's motto "lift as you climb" help someone else up the ladder of success with you...

26-Jul-12 20:50 | calcpageoff



#calcpa_el @ErnieAlmonite reminds of us NABA's motto: Lift as you climb!

26-Jul-12 20:49 | clar_rosso



#calcpa_el @erniealmonite humility curiosity & veracity keys to successful leadership - Rhode Island's future looks bright with Ernie as Gov!

26-Jul-12 20:44 | calcpageoff



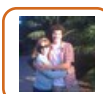
Ernie Almonite tells how to establish an ethical culture at Emerging Leaders Program. #calcpa_el <http://t.co/UQSUSRNy>

26-Jul-12 20:44 | billspaniel



#calcpa_el Now up, @ErnieAlmonite, a real leader who walks with integrity.

26-Jul-12 20:05 | clar_rosso



#calcpa_el Great networking tools - Joanne Black. Are you a 10?

26-Jul-12 20:03 | BarbRanes



Joanne Black: Always have a goal at a networking event, but goal should not be to get a client. It should be to build a relation. #calcpa_el

26-Jul-12 19:06 | billspaniel



"@billspaniel: Joanne Black: 10 sec intro should be succinct, compelling w/ hook. #calcpa_el" Use your Twitter profile!

26-Jul-12 18:49 | clar_rosso



Joanne Black: 10 sec intro should be succinct, compelling & have a hook. #calcpa_el

26-Jul-12 18:34 | billspaniel



Joanne Black's slide explains why do networking. #calcpa_el <http://t.co/hl6WmRAV>

26-Jul-12 18:33 | billspaniel



"@billspaniel: #calcpa_el Leader panel discussion w Ted Collins, Christie Forcash, Harley Neuman, Jason Lawson -- Great insights!

26-Jul-12 18:29 | clar_rosso



@joanneblack: To succeed at networking, you must be authentic. #calcpa_el

26-Jul-12 18:25 | clar_rosso



@Cal_CPA What has been your biggest takeaway from #calcpa_el so far?

26-Jul-12 18:18 | CalCPA_Students



RT@maragoni: 5 aspects well-being: Achievement, pos.emotion, engagement, relationships w/others, meaning & person @gretchenpisano #calcpa_el

25-Jul-12 21:57 | YupanaInc



5 aspects well-being: Achievement, positive emotion, engagement, relationships w/others, meaning & person @gretchenpisano #calcpa_el

25-Jul-12 21:52 | maragoni



Imp to know diff between happiness (can come and go quickly) & well-being (a steady center). Which is driving U? @gretchenpisano #calcpa_el

25-Jul-12 21:49 | maragoni



Progress on meaningful work--->positive inner work life--->happy, motivated employees: @gretchenpisano #calcpa_el

25-Jul-12 21:37 | maragoni



Next: The Perfectly Imbalanced Life w/@gretchenpisano #calcpa_el

25-Jul-12 21:18 | maragoni



Key principles 4 life & work RT @maragoni Building ethical behavior Positive attitude, reliability, professionalism @ErnieAlmonte #calcpa_el

25-Jul-12 20:57 | CalCPA_Students



Building ethical behavior: Positive attitude, reliability, professionalism @ErnieAlmonte #calcpa_el

25-Jul-12 20:50 | maragoni



Building on same theme...mentor v sponsor: Sponsorship is a transfer of credibility to someone else. @ErnieAlmonte #calcpa_el @Cal_CPA

25-Jul-12 20:37 | jillgorman



Now up: Establishing an ethical culture with @ErnieAlmonte #calcpa_el #calcpa_el

25-Jul-12 20:03 | maragoni



RT @Cal_CPA: A workplace constant is change: Some will be subtle, some gut-wrenching. #calcpa_el

25-Jul-12 19:25 | BCOTAX



A leader defines reality and creates hope. #calcpa_el @Cal_CPA @teresabriggs

25-Jul-12 19:01 | jillgorman



You can't make a dysfunctional team better if you don't address the leadership @bryanneider #calcpa_el

25-Jul-12 18:55 | gretchenpisano



As a leader, know when to seek input and when to make bold decisions @deborahmessemer #calcpa_el

25-Jul-12 18:54 | gretchenpisano



a leader's job is to define reality (straight talk & transparency) and create hope (vision and confidence) @teresabriggs #calcpa_el

25-Jul-12 18:53 | gretchenpisano



RT @clar_rosso Steve Mayer: If you are not inspired every day, it is a day wasted/ Sounds like our Steve! <http://t.co/JZbHdGDH> #calcpa_el

25-Jul-12 18:47 | BPMCPA



@teresabriggs: Listening, really listening, is a critical trait for leaders. #calcpa_el

25-Jul-12 17:44 | clar_rosso



Can't make a dysfunctional team better without addressing its leadership. #calcpa_el

25-Jul-12 17:42 | maragoni



What inspires you daily? RT @clar_rosso Steve Mayer @BPMCPA managing partner If you are not inspired every day, it's a day wasted #calcpa_el

25-Jul-12 17:40 | CalCPA_Students



A workplace constant is change: Some will be subtle, some gut-wrenching. #calcpa_el

25-Jul-12 17:36 | Cal_CPA



And be inspiring. RT @clar_rosso: Steve Mayer, @BPMCPA managing partner: If you are not inspired every day, it is a day wasted. #calcpa_el

25-Jul-12 17:27 | Cal_CPA



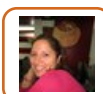
Steve Mayer, BPM managing partner: If you are not inspired every day, it is a day wasted. #calcpa_el

25-Jul-12 17:26 | clar_rosso



A leader defines reality and creates hope. #calcpa_el @Cal_CPA @teresabriggs

25-Jul-12 17:23 | jillgorman



Impressive how to think like a leader panelists! Self introductions -understanding their personal and professional side. #calcpa_el @Cal_CPA

25-Jul-12 17:12 | jillgorman



What's your story—personal or professional—when you knocked it out of the park as a leader? #calcpa_el #calcpa_el

25-Jul-12 16:59 | maragoni



RT @Cal_CPA Is unplugging possible? New reality: Work/life balance has shifted to work/life integration @gretchenpisano #calcpa_el

25-Jul-12 16:46 | jillgorman



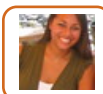
RT @maragoni: Is unplugging possible? New reality: Work/life balance has shifted to work/life integration: @gretchenpisano #calcpa_el

25-Jul-12 16:44 | Cal_CPA



Weaknesses are just strengths used in excess. Don't crush it, learn to dial down intensity. @gretchenpisano #calcpa_el @cal_cpa

25-Jul-12 16:44 | jillgorman



#Itweetbc it adds value to my experience as an attendee at thought building conferences like #calcpa_el and #intchg12

25-Jul-12 16:26 | mkbruin



Why do you tweet from events like #calcpa_el #intchg12 Share your ideas #Itweetbc

25-Jul-12 16:18 | mkbruin



Is unplugging possible? New reality: Work/life balance has shifted to work/life integration: @gretchenpisano #calcpa_el

25-Jul-12 16:15 | maragoni



Want to lead? Be present, or be absent, but don't do both: @gretchenpisano #calcpa_el

25-Jul-12 15:48 | maragoni



And we're off with @gretchenpisano: Leadership in the New Normal #calcpa_el

25-Jul-12 15:36 | maragoni



A little taste of today's keynote speaker @gretchenpisano—<http://t.co/Qd8T4M8e> #calcpa_el

25-Jul-12 14:58 | maragoni



V. excited about today's kickoff of the 2012 CalCPA Emerging Leaders program! #calcpa_el

25-Jul-12 14:44 | clar_rosso



Joanne Black (@ReferralSales) will talk networking Wednesday at #calcpa_el Here's a sneak peek:
<http://t.co/aZakGrHV>

24-Jul-12 22:41 | Cal_CPA



MT @CalCPA_Students: 3rd annual #calcpa_el program begins 7/25 <http://t.co/i16QFZVE> Learning doesn't stop at graduation for #CPAs

24-Jul-12 17:37 | Cal_CPA



What does it take to lead in the new normal? Looking forward to @gretchenpisano answering @ tomorrow's #calcpa_el <http://t.co/5Rj6QiFZ>

24-Jul-12 15:55 | maragoni