

---

---

---

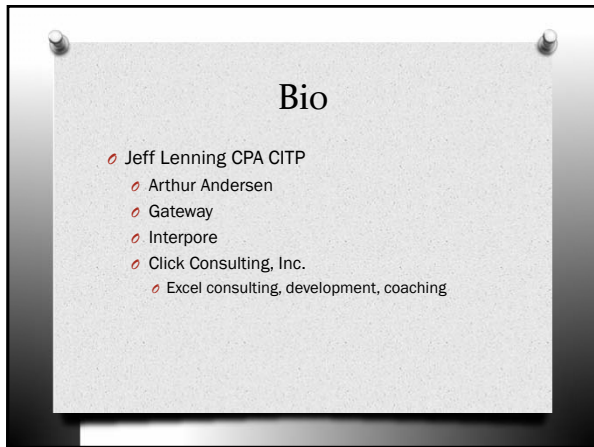
---

---

---

---

---



---

---

---

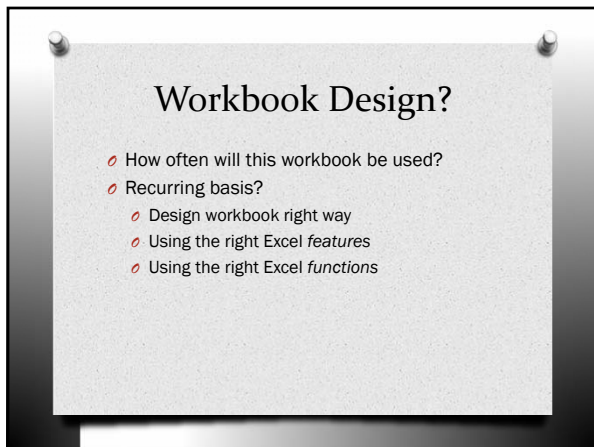
---

---

---

---

---



---

---

---

---

---

---

---

---

## Agenda

- o SUBTOTAL
- o Tables
- o SUMIFS
- o Remove Duplicates

---

---

---

---

---


---

---

---

## Subtotal

- o Most used worksheet function?
  - o What is your #1 function of all time?
  - o Is it the SUM function?



---

---

---

---

---


---

---

---

## Subtotal

- o SUBTOTAL()
  - o Better than SUM()
  - o Replacement for SUM()
- o SUM No More
  - o Publication: Calliope (Wisconsin CPA)
  - o Date: June 2011
  - o By: Jeff Lenning



Calliope  
Green  
with  
Good!

---

---

---

---

---

---

---

---

## Why?

The  
SUBTOTAL ( ) *function*  
Excludes  
all other  
SUBTOTAL ( ) *functions*  
in the range

---

---

---

---

---

---

---

---

## Subtotal

- o =SUBTOTAL(function\_num, ref1,...)
- o Where
  - o **Function\_num** tells the function what math to use
  - o **Ref1** is the range to subtotal
  - o ... additional references

Function_num	Function
1	Average
2	Count
...	...
9	Sum

---

---

---

---

---

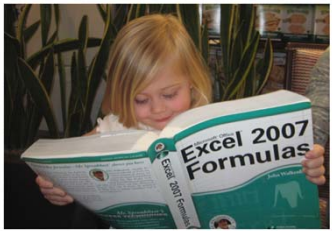
---

---

---

## Subtotal()

- o One of my daughter's favorite functions...



---

---

---

---

---

---

---

---

## Subtotal

- o Demo
- o Subtotal.xlsx

---

---

---

---

---

---

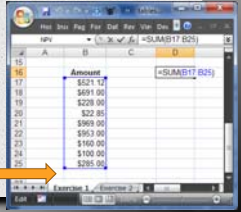
---

---

## Tables

- o Solve one of Excel's biggest pitfalls
- o When you type new data under a range, formulas (Pivot Tables, charts, etc) do NOT automatically update themselves to include the new data
- o Errors in your workbooks
- o Inefficient workbooks

Any values typed here are excluded from any formulas, functions, Pivot Tables, charts, Pivot Charts, etc that were created with the original data range




---

---

---

---

---

---

---

---

## Tables

- o Auto-expansion
- o Structured references
  - o TableName[ColumnName]
  - o TableName[#Headers]
  - o TableName[#Totals]
- o Others
- o Automatic formula fill-down
- o Automatic formulas
- o Introduced with Excel 2007

---

---

---

---

---

---

---

---

## Tables

- Demo
- Tables.xlsx

---

---

---

---

---

---

---

---

## SUMIFS

- Microsoft introduced the SUMIFS function with Excel 2007
- One of my top 5 favorite functions of all time
- Conditional summing function
- Similar to the SUM function because it adds stuff; but it only includes those rows where a condition is satisfied
- Similar to the SUMIF function, except it supports up to 127 conditions

`=SUMIFS(A1:A6,B1:B6,C1)`

---

---

---

---

---

---

---

---

## SUMIFS

- `=SUMIFS(sum_range, criteria_range1, criteria1, criteria_range2, criteria2,...)`
- Where:
  - **Sum\_range** is the column of numbers to add
  - **Criteria\_range1** is the range to inspect
  - **Criteria1** is the criteria for the range
  - ... up to 127 criteria\_range/criteria pairs

---

---

---

---

---

---

---

---

**SUMIFS**

- o Demo
- o Sumifs.xlsx

---

---

---

---

---

---

---

---

**Remove Duplicates**

- o Feature introduced in Excel 2007
- o Enables a fast way to remove duplicates
- o Can use to quickly generate summary reports in conjunction with SUMIFS

---

---

---

---

---

---

---

---

**Demo**

- o Remove duplicates.xlsx

---

---

---

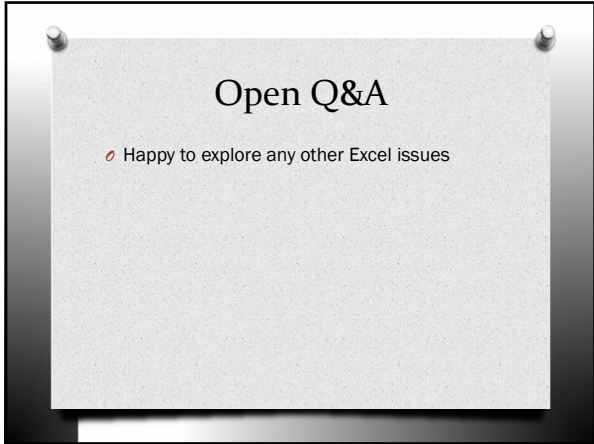
---

---

---

---

---



---

---

---

---

---

---

---

---



---

---

---

---

---

---

---

---